

**NEW!**

# **GreenSkin** Flooring Underlayment<sup>™</sup> Membrane

## ULTIMATE CRACK & MOISTURE PROTECTION

GreenSkin<sup>™</sup> Flooring is an Innovative, Self-Adhering Underlayment Membrane,  
For a Primerless Installation!

GS3675 914mm x 2286cm GreenSkin<sup>™</sup> Flooring Underlayment Membrane

GS1875 457mm x 2286cm GreenSkin<sup>™</sup> Flooring Underlayment Membrane



## GREENSKIN<sup>™</sup> FEATURES & BENEFITS

### EASY APPLICATION

- Save Time and Money with our 100% Primerless Chemistry - Simply Sweep, Mop and Lay GreenSkin<sup>™</sup> directly onto substrate.
- E-Z Peel Self Adhered/Peel and Stick Technology for Silky Smooth Tear Resistant Liner Release.

### MOISTURE PROTECTION

- Premium Water Resistant, Recycled Anti-Fracture Non-Wicking Membrane.
- Super Hi-Strength Patented Antimicrobial Non-Absorbent Design.
- Guaranteed Zero Moisture Wicking for the Ultimate in Water Resistance/Protection.
- Maximum Water Resistance/Protection via our Patented HYDRO-SEAL<sup>™</sup> Butt-Seam/Joint Design.

### EFFECTIVE CRACK SUPPRESSION/ISOLATION

- Patented Elastomeric Adhesive-Membrane Design Provides Up To 12mm Crack Strength.
- Passes (and exceeds) ANSI 118.12 for 3mm Crack Suppression/Isolation (High Performance Rating).
- 5 Layer Membrane Construction w/ Hi-Strength Insulating Water Tight Metallic Polyester Film Core.

### GREEN TECHNOLOGY

- EED Points Contribution: Up to 2 Points as GreenSkin<sup>™</sup> has Recycled Content of 35-40% Based on Product's Total Combined Weight.
- 40% Lighter Weight Than Typical Noxious Asphalt/Membrane Designs.
- Super-Aggressive Crystal Clear Hot Melt PSA Adhesive with ZeroSolvents or VOC's (Volatile Organic Compounds That Can be Harmful to Humans and the Environment).
- Highly Reflective/Super Energy Efficient Insulated Core.

# INSTALLATION INSTRUCTIONS



Wet Mop Clean to Prepare Surface  
(No Need to Prime)



Remove Backing and GreenSkin™  
Adheres Directly to Substrate



Lay Thinset and Flooring  
Directly on GreenSkin™

## APPLICATION

Priming is generally unnecessary except for highly porous surfaces such as mud beds, gypsum/gypcrete, and patching/leveling compounds and such materials. All surfaces should be tested prior to installing GreenSkin™ Flooring Underlayment to ensure best possible bonding scenario. Always apply a primer to the subfloor and allow it to dry for approximately 20 - 30 minutes before installing the GreenSkin™ Flooring Underlayment for best bond results.

- Measure and cut GreenSkin™ Flooring underlayment approximately 100mm - 150mm longer than required size for that portion of the job. Re-roll membrane.
- Carefully cut the release liner widthwise 150mm - 200mm from end. Line up side of membrane with desired edge, pull off release liner and adhere end of roll to the substrate.
- Press Membrane into place with flat side of trowel or a 75-100# Roller. If air pockets occur, place a small slit in the affected area of the membrane. Smooth out with a roller or trowel.
- Begin peeling remainder of release liner (pull the release liner material close to the floor while pulling away from membrane roll to allow for a more controlled application) while pressing membrane into place with flat side of trowel or Roller.
- Trim end to desired length.

*Edge & Seams: Seams may be overlap or butt-joint seams.*

After GreenSkin™ Flooring Underlayment is adhered, ceramic or stone tiles can be installed with a latex modified thinset mortar meeting the ANSI 118.4 standard. Follow mortar manufacturer's recommendations for trowel size and open time. Use square notched trowel so as not to damage membrane during thinset application. Continue to follow the TCNA's installation requirements through the remainder of the installation.

Natural stone: When installing natural stone over GreenSkin™ (As with any other impervious membrane), it is important to maintain a thin-set thickness of 9mm or less after the tile is embedded, even if the mortar manufacturer allows for thicker installations. Thicker mortar beds can potentially provide sufficient moisture to cause some natural stones to warp or crown.

**GreenSkin** Flooring Underlayment™  
Membrane







## RECOMMENDATIONS FOR BEST PERFORMANCE:

- Not recommended for use where vertical floor movement is present.
- Not recommended for use where horizontal floor movement is greater than 9mm.
- Not recommended to cover joints or cracks larger than 9mm.
- Not recommended for use on concrete floors where hydrostatic head pressure exists or moisture vapor transmission in excess of 1.4-1.8kg is present without proper sealers.
- Existing cracks larger than 80mm should be prepared with proper backing material prior to installing GreenSkin™ Flooring underlayment.
- Do not install over wet primer.
- For installations over plywood subfloors, please refer to TCA Handbook F147-05. For expansion joints, reference TCA Method EJ171-05.
- Do not apply GreenSkin™ Flooring Underlayment over substrates containing solvent based waterproofing preservatives that could chemically react with the membrane such as Marine Grade plywood.
- When installed as a crack repair, membrane must exceed 1.5x the diagonal width of the tile.
- Entire tile must be supported by CSI membrane. Note: Tile can easily buckle and crack due to lack of proper expansion joints placed in tile. See TCA handbook detail EJ171 for guidelines.

## SOFT JOINTS:

- There are guidelines that need to be followed for a soft joint to be effective. Manufacturer accepts and recommends compliance with the TCNA guidelines.
- In general a control joint should be every 500mm – 635mm in each direction for interior installations and every 200mm – 305mm in each direction for exterior installations. Interior installations which are exposed to direct sunlight also need control joints every 200mm – 305mm.
- Along with these control joints you also need to ensure proper perimeter spacing.
- Manufacturer understands all installations are different and modifications may be made to individual projects.
- When “bandaiding” a cracked floor; Manufacturer recommends no less than 1.5x the diagonal width of the tile for the width of the membrane. Individual tile pieces should be completely adhered to the membrane and not partly to a non-membrane covered substrate.

## JOINT SPACING:

- 400mm O.C. 15mm T/G exterior grade plywood, single layer.
- 490mm O.C. 18mm exterior grade plywood/OSB, single layer.
- 610mm O.C. 18mm T/G exterior grade plywood under 10mm exterior grade plywood/OSB.
- All scenarios with a 3mm. (3mm) gap between boards.

## TESTING:

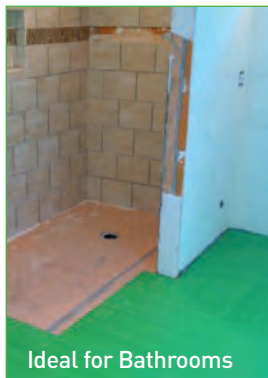
- Passes (and exceeds) ANSI 118.12 for 3mm Crack Suppression/Isolation (High Performance Rating)
- Adhesion to Plywood: ASTM\* D903 = 2kg/in width
- Tensile Strength MD: ASTM\* D882 = 95kg/In-Width – TD: ASTM\* D882 = 100kg/In-Width
- Tear MD: ASTM\* D1922 = 5.7kg – TD: ASTM\* D1922 = 6kg
- Elongation at Break: ASTM\* D412 = 500% Minimum
- Application Temperature = -9.5C to 60C
- Service Temperature = -32C to 90C
- Robinson Flooring: ASTM\* C627 = Extra Heavy Commercial Rating (successfully completed cycles 1-14)
- Puncture: ASTM\* E154 = 85kg
- Water Vapor Transmission Rate: ASTM\* E 96-53 (Method E) = .0011 perms

*ASTM is the internationally recognized testing agency.*

## STORAGE AND HANDLING:

Store all material inside in a dry space at temperatures between -1C and 32 degrees celsius.

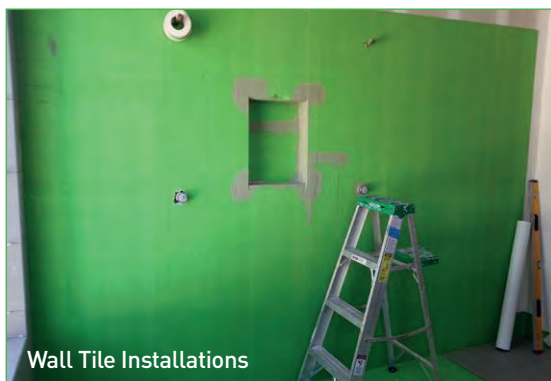
Do not remove material from box until ready to use or store in direct sunlight.



Ideal for Bathrooms



Moisture Protection



Wall Tile Installations



Floor Tile Installations

**GreenSkin** Flooring Underlayment™  
Membrane





## TCNA CERTIFIED “HIGHEST PERFORMANCE” CRACK STRENGTH RATING

Primerless Process Saves You Time And Money  
40% Lighter Than Typical Noxious Asphalt Underlayments  
Made in the USA from 35-40% Recycled Material



..... 1mm Thick



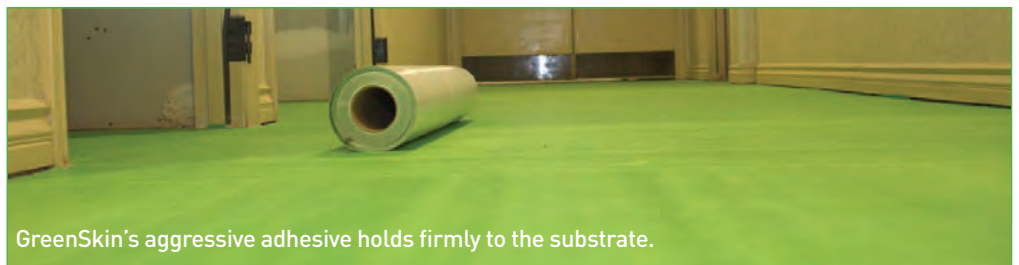
High Strength Water Tight  
Membrane

..... Super Sticky PSA/Glue with Zero  
VOCs/Solvents

..... Peel and Stick Technology for  
Smooth Installation

## SURFACE PREPARATION FOR OPTIMAL RESULTS

- Ensure conditions are satisfactory for proper installation. Do not proceed with installation until unsatisfactory conditions are corrected.
- Installation and subfloor requirements must conform to TCNA standards.
- Concrete subfloors must be dry, clean and free of dirt, grease, wax, paint, oil or anything that would adversely affect adhesion of the GreenSkin™ Flooring Underlayment (Sweep, vacuum and damp sponge the substrate for best results).
- Grind bumps and level slab depressions with a quality latex underlayment in accordance with manufacturers' instructions.
- Scarify smooth surfaces.
- Check subfloor for excessive moisture. If subfloor moisture/vapor is beyond 1.8kg emissions GreenSkin™ Flooring Underlayment membrane cannot be used without first applying a sealer.
- Leveling cements must be completely dry before membrane application.
- Surfaces must be flat, structurally sound and meet 1/360 for ceramic and porcelain tile or 1/720 for stone tile on live or dead loads. Maximum variation of 6mm in 305cm from the required plane.



GreenSkin's aggressive adhesive holds firmly to the substrate.

GreenSkin™ Flooring Underlayment™ Membrane





# GreenSkin Flooring Underlayment™ Membrane

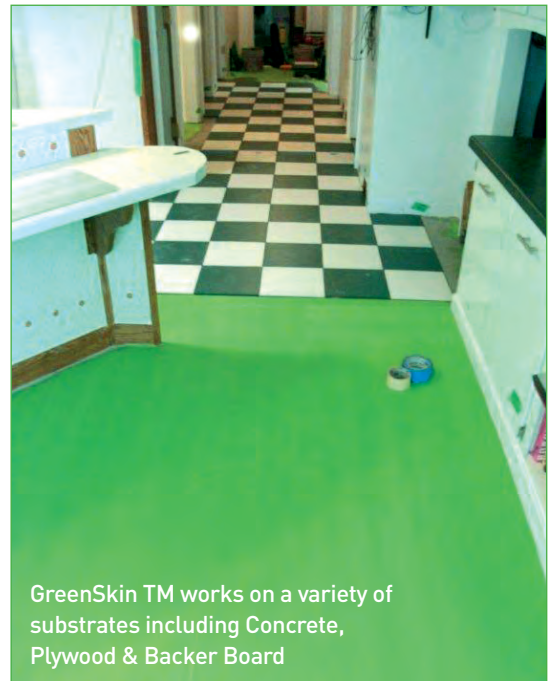
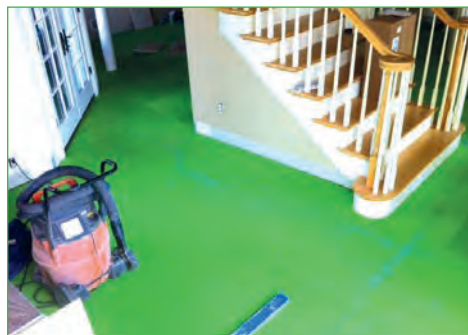
## WARRANTY:

GreenSkin™ is warranted to be free of defects in manufacturing for a period 5 years. It is warranted against floor tile fractures due to horizontal movement of the substrate following ANSI 108 procedures for tile installations. Manufacturer guarantees to the original owner that GreenSkin will be free from manufacturing defects, will not break down, deteriorate or fail to isolate finished floor from 10mm horizontal movement of substrate for full floor coverage or 6mm movement with 1 1/2 times the diagonal width of the tile installation when installed in accordance with ANSI tile industry standards. Should a GreenSkin™ product prove defective during the term of this guarantee, Manufacturer will pay for the replacement of the portion of the installation that involves the defective product. This payment will include finish materials, labour and intallation; provided the cost per square meter to Manufacture does not exceed the original cost of installation per square meter.

Warranty is VOID if GreenSkin™ is less than 1 1/2 times the diagonal width of tile being installed. Installation must be in accordance with ANSI 118.12. Warranty is void if hydrostatic water pressure exists. Water Vapour Transmission shall not exceed 2.5kg per 93 sqm/24hr period. All expansion joints should be in compliance with the Tile Council of America Installation Handbook.

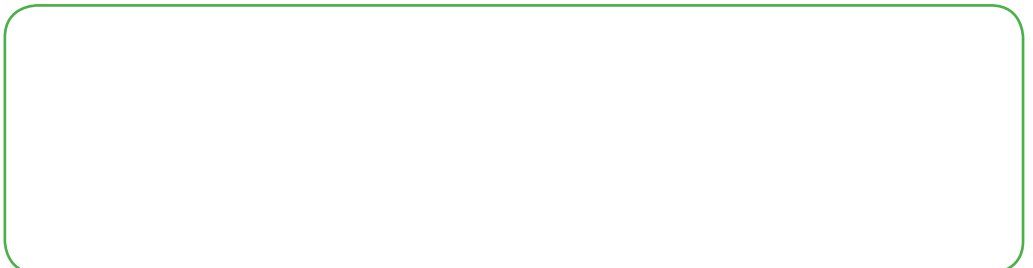
**Manufacturer reserves the right to inspect all claims.**

**Please Note: All measurements converted from imperial to metric have been rounded.**



GreenSkin™ works on a variety of substrates including Concrete, Plywood & Backer Board

**DISTRIBUTED BY**



# GreenSkin Flooring Underlayment™ Membrane