

NEOLITH[®]
SINTERED STONE

EXTRAORDINARY SURFACE

scratch resistant
stain resistant
heat resistant
hygienic
100% natural
easy to clean

A NEW WAY OF LOOKING
AT SHAPES AND SPACES

cdk
CDK STONE



BETON KITCHEN BENCHTOP + CABINERY



IRON CORTEN FEATURE WALLS

NEOLITH... THE NATURAL CHOICE

Transforming imagination into functionality, Neolith Sintered Stone is the premium fashion stone. Imported directly from Europe, Neolith synergises the utmost design principles with functionality, resulting in a scratch, stain and heat-resistant surface. Made to the highest international standards, Neolith is available in a wide range of styles and textures and is suitable for the most demanding applications.

Neolith is synonymous with excellence and obsession for details. Its striking designs and superior technical characteristics make it an ideal material for kitchens, bathrooms, furnishings, display fittings, shop fittings, cupboards, work surfaces, wall and floor cladding.

Redefining architecture around the globe, Neolith has featured in numerous award winning and innovative designs. After years of research and innovation, Neolith is 100% ecofriendly. Consisting of all raw materials pressed under immense pressure, Neolith promises a lifetime of excellent service.



IRON GREY WALL + FIREPLACE + PHEDRA HEARTH

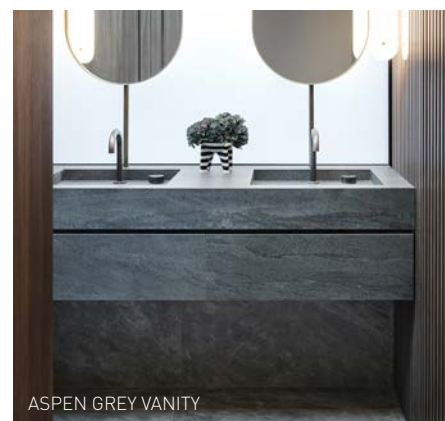
NEOLITH APPLICATIONS: A NEW WAY OF LOOKING AT SHAPES AND SPACES

VOGUE BENCHTOPS & BATHROOMS

Whether you are after a lavish lifestyle, enviable apartment or creating your dream home, Neolith creates a truly elegant look. With its natural allure and unparalleled characteristics, Neolith is ideal for any kitchen benchtop or bathroom vanity. Adding a touch of elegance to any design, Neolith has a wide range of styles and finishes to suit every home.

STYLISH FLOORS & WALLS

Neolith's large sizes create a uniformed, consistent and chic look across floors and walls. Due to its durability, Neolith is an extremely hard-wearing material that can withstand heavy foot traffic areas and abrasions.



ASPEN GREY VANITY

OPULENT SURROUNDS & FEATURES

Create a consistent and alluring style across any space with Neolith features and surrounds. With unlimited applications, Neolith adds a touch of opulence to fireplaces, BBQ areas, feature walls, furniture, cabinetry, pool surroundings and more.

FASHIONABLE FACADES

International designers are being fashion-forward with Neolith facades. Due to the innate beauty, superior technology, resistance against temperature and UV-fading, Neolith is ideal for ventilated facade systems and curtain wall applications. With so many colour combinations and continuous styles, this Sintered Stone creates an impressive facade solution.



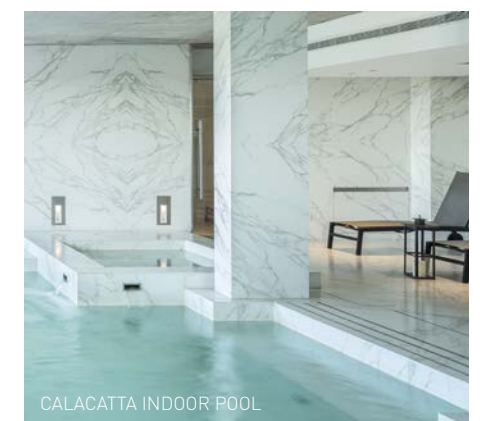
IRON CORTEN OUTDOOR SHOWER

GRAND COMMERCIAL & RETAIL

Redefining the way designers are creating commercial and retail spaces, Neolith pushes the boundaries of style to create truly memorable designs. With an endless number of applications, Neolith's styles can be crafted to reverberate any desire.

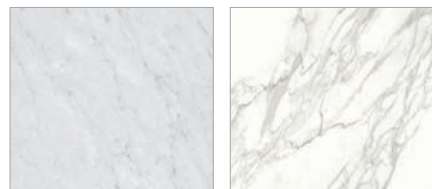
BOOKMATCHING

An enduring passion for creating unique and continuous designs has propelled Neolith to craft a reversed style - meaning a bookmatched design can be achieved. Bookmatching is the design practice of matching two stones together so they mirror each other - giving the illusion of an open book. This effect is perfect for continuing Neolith's veining or natural grain.

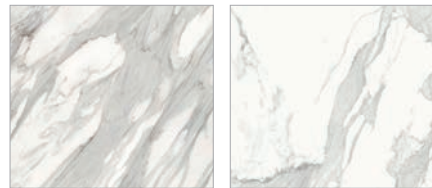


CALACATTA INDOOR POOL

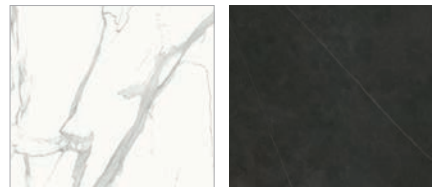
° CLASSTONE



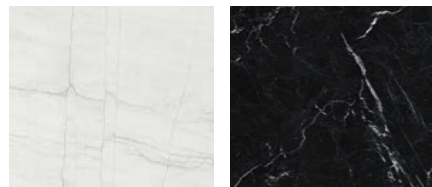
Blanco Carrara BC02 Calacatta C01



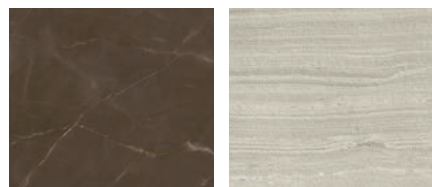
Calacatta Gold CG01 Estuario E01



Estuario E05 Calatorao



Mont Blanc Nero Marquina



Pulpis Strata Argentum

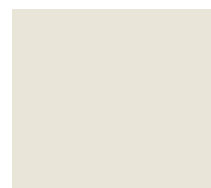


Estuario

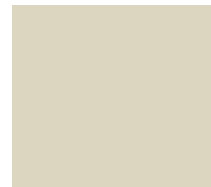
° COLORFEEL



Arctic White



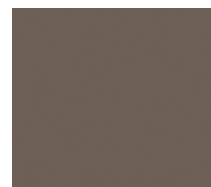
Nieve



Avorio



Perla



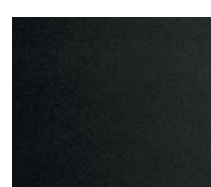
Bombón



Luna

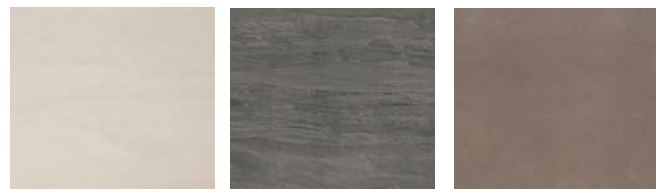


Humo

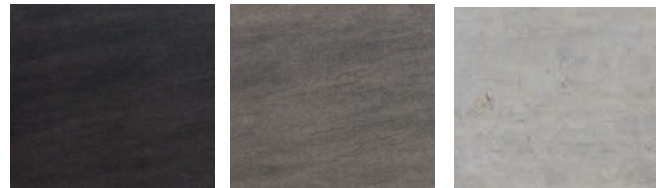


Nero

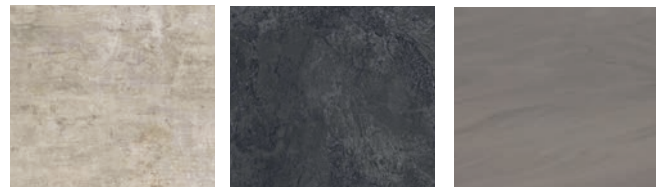
° FUSION



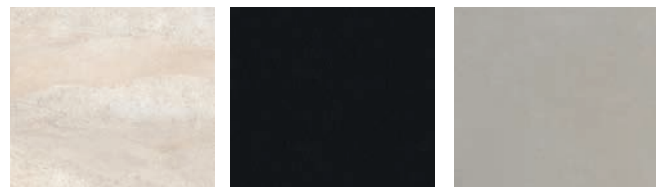
Arena Aspen Grey Barro



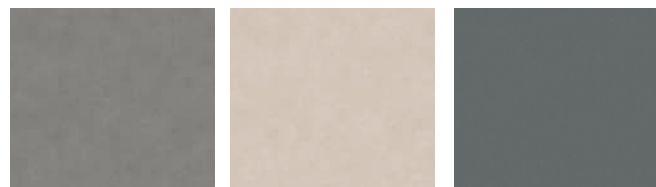
Basalt Black Basalt Grey Beton



Concrete Taupe Krater Lava



Mirage Nero Zimbabwe Phedra



Pietra di Luna Pietra di Osso Pietra di Piombo

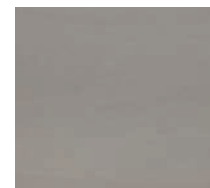


Strata Argentum

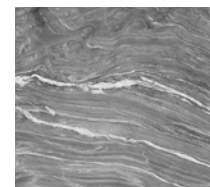
° IRON



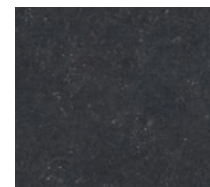
Basalt Beige



Cement



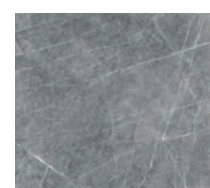
Mar Del Plata



Pierre Bleue



Retrostone



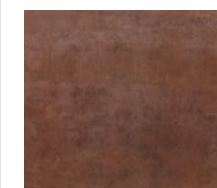
Zaha Stone



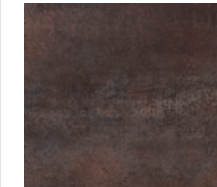
Cement



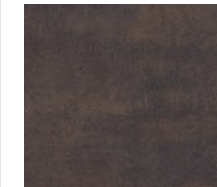
Iron Frost



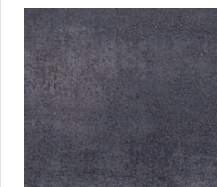
Iron Corten



Iron Copper



Iron Moss



Iron Grey

° TIMBER

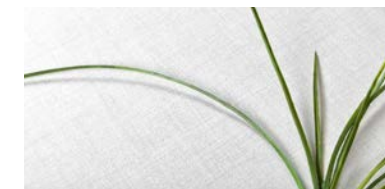


La Boheme 01

° TEXTIL



Textil White



Neolith Textil White

YOU ARE ONE STEP CLOSER
TO CHOOSING YOUR
NEOLITH MASTERPIECE



Zaha Stone

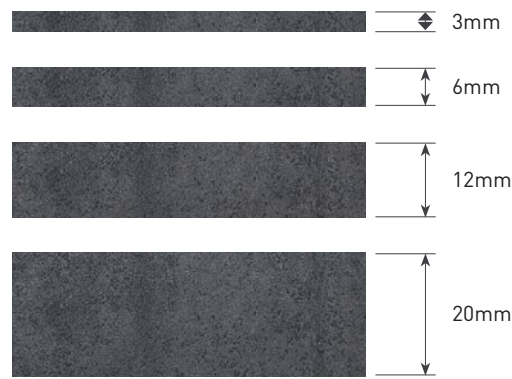


Iron Copper



Mirage

NEOLITH SINTERED STONE COMPACT SURFACE FORMAT SIZE & THICKNESS



3mm is ideal for use as indoor furnishings in bathrooms, kitchens and on furniture such as tables, wardrobes/closets, doors and office partitions. This thickness is also ideal for projects where the weight of the material is a consideration such as within an elevator.

6mm is ideal for use in flooring, walls (both indoors and outdoors), stairs, pool surrounds and exterior facades.

12mm is ideal for kitchen and bathroom benchtops. This size allows for better utilisation of the surface, as well as reduced waste. For instance, one large slab can be utilised for two full average sized benchtops.

20mm is ideal for kitchen benchtops. Inspired by a growing demand among designers and specifiers for thicker kitchen benchtops.

Please contact CDK Stone for available colours, sizes, thicknesses and finishes.

SINTERED STONE SLABS



3600 x 1200 x 3mm
3600 x 1200 x 6mm

3200 x 1600 x 12mm
3200 x 1600 x 20mm
3200 x 1500 x 6mm
2600 x 1200 x 6mm

NEOLITH SINTERED STONE AVAILABLE IN 4 DIFFERENT FINISHES



SATIN

Neolith's original finish is characterised by its natural matte look and a slightly textured feel.



SILK

The Silk finish is much softer to the touch. The smooth nature of the surface is achieved through Neolith's Airless Pistol [NAP] technology.



POLISHED

The Polished finish adds shine, depth, and a reflection that stands out through its complete flatness and a touch of elegance.



RIVERWASHED

Neolith's Riverwashed finish is compared to a bush hammered or aged finish and adds a touch of realism to Neolith's range.

SINTERED STONE TILES



1500 x 1500 x 6mm



1500 x 750 x 6mm



750 x 750 x 6mm



1200 x 1200 x 3mm
1200 x 1200 x 6mm



1200 x 600 x 3mm
1200 x 600 x 6mm

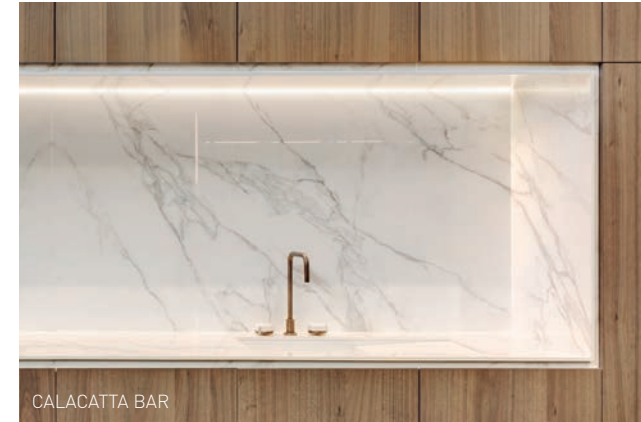


600 x 600 x 3mm
600 x 600 x 6mm

*Please note: Sizing is not to scale. Size availability may vary.

NEOLITH[®]

SINTERED STONE



TECHNICAL FEATURES



SCRATCH RESISTANT
Resistant to scratching and abrasion due to the hardness of the surface.



RESISTANT TO HIGH TEMPERATURES
Does not burn in contact with fire or let off smoke or toxic substances.



RESISTANT TO UV RAYS
Does not deteriorate from exposure to the sun or extreme temperatures.



EASY TO CLEAN
Resistant to chemical cleaning agents.



WATERPROOF
An absorption level of near zero makes it resistant to stains.



SUITABLE FOR HEAVY TRAFFIC
Due to the hardness of the surface.



RESISTANT TO ICE AND FREEZING
Neolith is not damaged by low temperatures.



HYGIENIC
Completely suitable for contact with food. Does not release harmful substances.



100% RECYCLABLE
Up to 52% of any Neolith slab is comprised of recycled raw materials.



100% NATURAL
Resin-free. Does not release any harmful substances into the environment.



LIGHT
The 3mm slab is only 7kg/m² and the 12mm slab is 30kg/m².



Melbourne

4-6 Freighter Road
Moorabbin VIC 3189
03 8552 6000

Melbourne Showroom

597 Church Street
Richmond VIC 3121
03 8552 6090

Sydney

20 Yulong Close
Moorebank NSW 2170
02 9822 5155

Sydney Showroom

40-42 O'Riordan Street
Alexandria NSW 2015
02 9822 5910

Gold Coast

26 Wrights Place
Arundel QLD 4214
07 5537 3222

Adelaide

22 Richard Street
Hindmarsh SA 5007
08 8340 2877

Perth

231 Camboon Road
Malaga WA 6090
08 6240 2200

W www.cdkstone.com.au

E info@cdkstone.com.au

  [cdkstone](https://www.instagram.com/cdkstone)